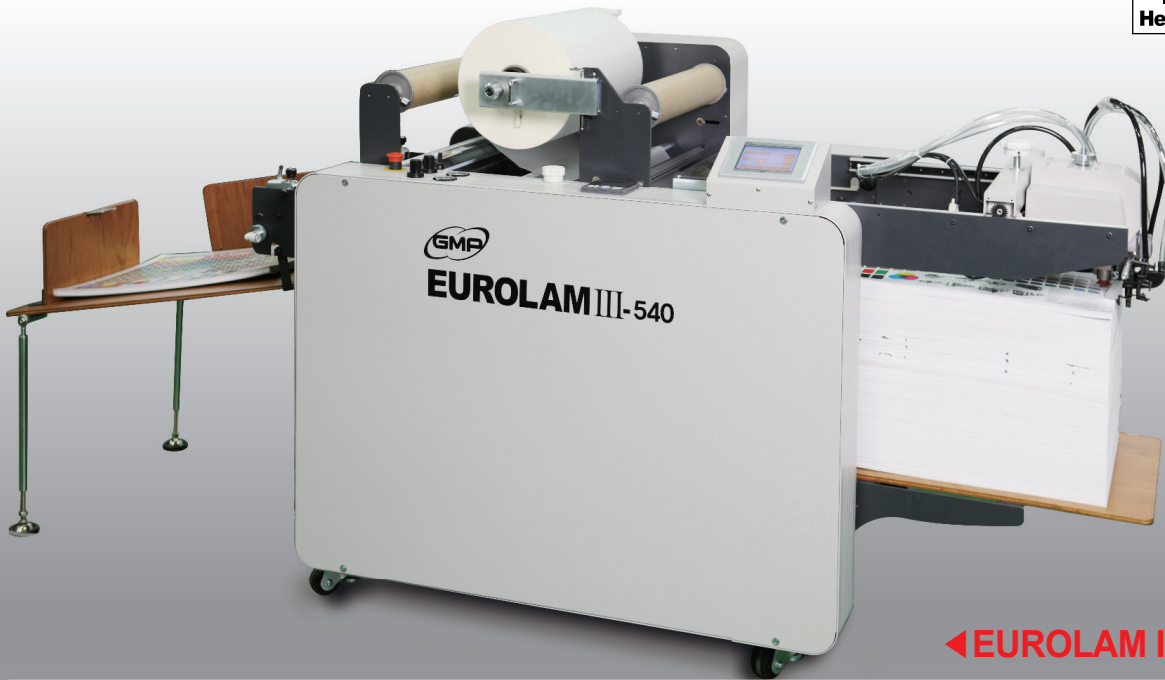
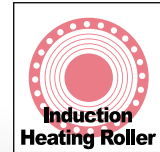


Perfect Solution for Digital Print On Demand Finishing Laminator



# EUROLAM III Series

- ✓ EUROLAM III-E540
- ✓ EUROLAM III-540 G10P
- ✓ EUROLAM III-540 G10P-ST50
- ✓ EUROLAM III-540DUAL G10P
- ✓ EUROLAM III-540DUAL G10P-ST50
- ✓ EUROLAM III-540 DUPLEX G10P
- ✓ EUROLAM III-540 DUPLEX G10P-ST50
- ✓ EUROLAM III-800 DUAL G10P



◀ EUROLAM III-540



EUROLAM III-540 DUPLEX ▶

► **KEY POINTS OF INVENTION FOR EUROLAM III Series**

**1. Main Device**

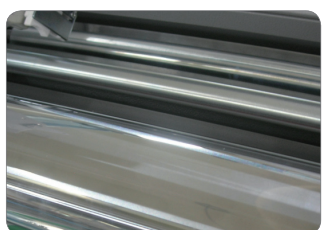
- Induction Heating Roller For Accurate Temperature( $\pm 1^{\circ}\text{C}$ )
- High Speed Stream Feeder(6,000sheet/HR)
- Dual Perforating (Top & In-Line)
- Film Slitting Knife and Rewinder
- Film Rewinder for Fusing
- Rotary Cutting System (EUROLAM III-540 DUPLEX)
- High Pressured Laminating Roller with Pneumatic Cylinder
- Accurate Temperature Control with Roller Surface Temp. Sensor
- Perfect Bursting with Pneumatic Cylinder
- Vacuum Pump Included

**2. System Control**

- Best Reilable & Durable by PLC and Servo Control System
- Touch Panel Display Control
- Servo Motor Drive for Feeder Head

**3. Convenience**

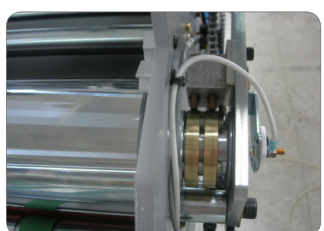
- Door for Easy Maintenance
- Compact Design
- High Volume Paper Loading Table
- Easy Exchangeable Roller
- Quick Warm-up time (10 mins.)



High Glossy Chrome Roller



Automatic Feeding Gap Adjustable Device



Roller Temperature Sensor



In-Line Perforator



Film Perforator(Optional)



Cantilever Type Film Shaft

► **Jogging Table (Optional)**



Automatically Jogs the finished output for easy pallet loading

- Model : Jogging Table-700
- Out-put Height:130mm
- Dimensions(WxLxH) : 795x820x410~545mm
- Power Requirements : AC220V, 60Hz

► **Auto Stacker (Optional)**



Automatic stacking the finished output for easy pallet loading

- Model : ST-50
- Out-put Height : 500mm
- Dimensions(WxLxH) : 830x1190x950~545mm
- Power Requirements : AC220~240V, 50~60Hz

### ► FEATURES OF EUROLAM III Series

- Environmental-Friendly "Thermalami" System
- Perfect Lamination for whole kinds of substrates without bubble,
- Easy to convert for Embossing lamination mode
  - 6 patterns of Embossing Rollers (for Eurolam III Series)
- Space Effective Design
- Equipped the Roller Cooling System for Perfect Embossing Effect
- Film Tension Adjustment Device and Decurling Device are equipped.

### ► APPLICATION Of EUROLAM II Series

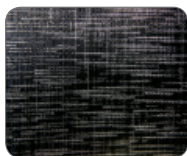
- POSTERS, POP SIGNS, MENU
- BOOKCOVERS
- PHOTO ALBUM COVERS & INNER PAGES
- PHOTO EMBOSSING LAMINATION
- GIFT & GREETINGS CARDS
- NAME CARD LAMINATION with SPOT FUSING
- ANTI COUNTERFEIT LAMINATION
- SECURITY PRINTING of GIFT CERTIFICATE
- LABELS
- LAMINATING for SECURITY of CREDIT CARDS

### ► BASIC PATTERNS OF EMBOSSING ROLLERS

Various Embossing Effect for High Valued Added Products



▲ Linen Texture



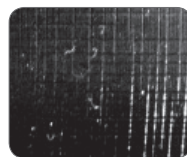
▲ Fine Texture



▲ Leather Texture



▲ Sparkler Texture



▲ Silky Texture



▲ Photo Texture



### ► THERMAL LAMINATING FILMS

POLYNEX Gloss	POLYNEX Matt	PERFEX	NYLONEX	SLEEKING FOIL	MICRO NEX
[Bopp base]	[Bopp base]	[Pet base ]	[Nylon base]	[Fusing foil]	
Gloss 25	Matt 28	Gloss high speed-29	Gloss-38	Gloss sleeking foil	MicronexGloss
Gloss Emboright-40	Matt supermelt-28	Gloss-38	Gloss supermelt-40	Matt sleeking foil	Micronex Matt
Gloss Supermelt-25	Matt supermelt-43	Gloss UltraBond PT-38	Gloss UltraBond PT-40	Hologram sleeking foil - Spectrum - Milkyway - Crystal - Star - Mosaic - Sparkle - Hyper plaid	Micronex Dura gloss
Gloss Supermelt-40	Matt UltraBond PT-28	Matt-32	Matt antiscuff-41		
Gloss UltraBond PT-25	Matt UltraBond PT-43	Matt-38	Matt antiscuff supermelt-44		
Gloss UltraBond PT-40	Matt Hard coat-43	Matt UltraBond PT-38	Matt antiscuff UltraBond PT-44		
	Matt hard coat supermelt-43	Silver-25			
	Silkfeel-28			Metallic sleeking foil -Gold,Silver	
	Silkfeel-36				
	Silkfeel supermelt-43				
	Silkfeel UltraBond PT-28				
	Silkfeel UltraBond PT-43				

## ► SPECIFICATION OF EACH MODEL

Models	EUROLAM III- E540	EUROLAM III- 540	EUROLAM III- 540 DUAL	EUROLAM III- 540 DUPLEX	EUROLAM III- 800
Dimension (W*L*H, mm)	940*2600*1257	940*2600*1257	940*2900*1257	940*2700*1257	1200*2600*1257
Net Weight (kgs)	600	600	950	800	800
Laminating Speed (m/min.)	30	30	30	30	30
Max. Paper Size (W*L, mm)	540*740	540*740	540*740	540*740	540*740
Laminating Films	• Single : POLYNEX, PERFEX, NYLONEX • Sleeking foil : GLOSS, MATT, HOLOGRAM, METALLIC	• Single : POLYNEX, PERFEX, NYLONEX • Sleeking foil : GLOSS, MATT, HOLOGRAM, METALLIC	• Single : POLYNEX, PERFEX, NYLONEX • Sleeking foil : GLOSS, MATT, HOLOGRAM, METALLIC	• Single : POLYNEX, PERFEX, NYLONEX • Sleeking foil : GLOSS, MATT, HOLOGRAM, METALLIC • Double : POLYNEX	• Single : POLYNEX, PERFEX, NYLONEX • Sleeking foil : GLOSS, MATT, HOLOGRAM, METALLIC
Substrate Thickness	120~350g/m <sup>2</sup>	120~350g/m <sup>2</sup>	120~350g/m <sup>2</sup>	120~350g/m <sup>2</sup>	120~350g/m <sup>2</sup>
Front Roller Diameter	T: 163mm / B: 150mm	T: 163mm / B: 150mm	T: 163mm / B: 150mm	T: 163mm / B: 150mm	T: 163mm / B: 150mm
Rear Roller Diameter	80mm	80mm	80mm	80mm	80mm
Power Requirement	380-400V 3-phase 50/60Hz	380-400V 3-phase 50/60Hz	380-400V 3-phase 50/60Hz	380-400V 3-phase 50/60Hz	380-400V 3-phase 50/60Hz
Power Consumption	12kW	12kW	18kW	24kW	15kW
Warm-up Time (mins.)	10	10	10	10	10
Heating System	Induction Heating System	Induction Heating System	Induction Heating System	Induction Heating System	Induction Heating System
Laminating Temp. (°C)	MAX.150	MAX.150	MAX.150	MAX.150	MAX.150
Temp. Control	Key Pad	Key Pad	Key Pad	Key Pad	Key Pad
Speed Control	LCD Panel	LCD Panel	LCD Panel	LCD Panel	LCD Panel
Display for Temp. & Speed	LCD Panel	LCD Panel	LCD Panel	LCD Panel	LCD Panel
Pressure Control	Pneumatic Cylinder	Pneumatic Cylinder	Pneumatic Cylinder	Pneumatic Cylinder	Pneumatic Cylinder
Film Core	77mm (3" )/DUAL	77mm (3" )/DUAL	77mm (3" )/DUAL	77mm (3" )/DUAL	77mm (3" )/DUAL

## ► RECOMMENDABLE FILMS FOR EACH JOB

FILMS	Print		Sleeking (fusing)		Hologram sleeking	
	Indigo	Toner	Indigo	Toner	Indigo	Toner
<b>POLYNEX MATT</b> • Silkfeel-28 • Silkfeel-36 • Silkfeel Supermelt-43 • Silkfeel Ultrabond PT-28 • Silkfeel Ultrabond PT-43	○ 165°C	○ Oil Fusing	○ 125°C	○ 130°C	○ 125°C	○ 130°C

\* Application of Job, Temp. & Speed in the above table might be changed.



RoHS



UL-WTDP, CB-TM



CE