



## VersaUV LEF2-200



Specifications		
Printing method	Piezo ink-jet method	
Attachable objects to be printed on	Width	Max. 538 mm (21.2 in.)
	Length	Max. 360 mm (14.2 in.)
	Thickness	Max. 100 mm (3.94 in.)
	Weight	Max. 5 kg (11 lb.)
Maximum printing width/printing length	Max. 508 (width) × 330 (length) mm (20 × 13 in.)	
Ink	Type	ECO-UV (EUV, EUV4) 220 ml cartridge
	Colors	Five colors (cyan, magenta, yellow, black, and white) Five colors (cyan, magenta, yellow, black, and white) and primer Six colors (cyan, magenta, yellow, black, white, and gloss)
Ink-curing unit	Built-in UV-LED lamp	
Printing resolution (dots per inch)	Max. 1440 dpi	
Distance accuracy*	Error of less than ±0.3% of distance traveled or ±0.3 mm (±11.8 mil), whichever is greater	
Connectivity	Ethernet (10BASE-T/100BASE-TX, automatic switching)	
Power-saving function	Automatic sleep feature	
Power requirements	AC100 to 240 V ± 10%, 1.8 A, 50/60 Hz	
Power consumption	During operation	Approx. 149 W
	Sleep mode	Approx. 13 W
Acoustic noise level	During operation	60 dB (A) or less
	During standby	49 dB (A) or less
Outer dimensions	1,202 (W) × 962 (D) × 549 (H) mm (47.3 [W] × 37.9 [D] × 21.6 [H] in.)	
Weight	110 kg (242.5 lb.)	
Environment	During operation	Temperature: 20 to 32°C (68 to 89.6°F) (22°C (71.6°F) or higher recommended), Humidity: 35 to 80% RH (no condensation)
	Not operating	Temperature: 5 to 40°C (41 to 104°F), Humidity: 20 to 80% RH (no condensation)
Included items	Power cord, software RIP, cleaning liquid, drain bottle, manuals, etc.	

\* Temperature: 25°C (77°F), Humidity: 50% RH

VersaWorks 6 System Requirements	
Operating System	Windows® 10 (32/64-bit) Windows® 8.1 (32/64-bit) Windows® 7 Ultimate / Professional (32/64-bit)
CPU	Intel® Core™ 2 Duo, 2.0 GHz or faster recommended
RAM	2 GB or more recommended
Video card and monitor	A resolution of 1,280 x 1,024 or more
Free hard-disk space	40 GB or more recommended
Hard-disk file system	NTFS format
Optical drive	DVD-ROM drive
Other	Internet connection recommended

Options		
	Model	Description
ECO-UV Ink	EUV-CY/EUV4-CY	Cyan, 220 ml
	EUV-MG/EUV4-MG	Magenta, 220 ml
	EUV-YE/EUV4-YE	Yellow, 220 ml
	EUV-BK/EUV4-BK	Black, 220 ml
	EUV-WH/EUV4-WH	White, 220 ml
	EUV-GL/EUV4-GL	Gloss, 220 ml
	EUV-PR *	Primer, 220 ml
Cleaning liquid	SL-CL	220 ml

\*Primer ink adhesion may vary depending on substrate and conditions. Testing ink adhesion prior to production is recommended.

### Optional Deodorizing System



An optional deodorizing system is available for the LEF2-200. This includes an activated carbon filter which effectively removes the odor and volatile substances that occur during printing. This unit can be placed easily underneath the LEF2-200.



## Benchttop UV Flatbed Printer

# VersaUV

## LEF2-200

This device is capable of printing on a wide variety of substrates. However, the print quality or the ink adhesion may vary according to the substrate used and it is strongly recommended to test the substrate for compatibility to ensure optimal print results.



Vaporized components may slightly irritate the eyes, nose and/or throat during and following printing with this product. If continuously printing in a closed space, the density of volatile compositions will accumulate and may irritate the eyes, nose and/or throat. Roland DG strongly recommends that you install a ventilation system and use this product in a well-ventilated room. For more information, please contact your local distributor or dealer.

**About White Ink** Due to the nature of white ink, the pigment will settle in the cartridge and ink flow system, requiring you to shake the cartridge before each use.

Roland DG reserves the right to make changes in specifications, materials or accessories without notice. Actual output may vary. For optimum output quality, periodic maintenance to critical components may be required. Please contact your Roland DG dealer for details. No guarantee or warranty is implied other than expressly stated. Roland DG shall not be liable for any incidental or consequential damages, whether foreseeable or not, caused by defects in such products. PANTONE® is the property of Pantone LLC. All other trademarks are the property of their respective owners. Reproduction or use of copyrighted material is governed by local, national, and international laws. Customers are responsible for observing all applicable laws and are liable for any infringement. Roland DG Corporation has licensed the MMP technology from the TPL Group.



AUTHORISED DEALER:

March, 2019

**AARQUEGROUP** FOR MORE INFORMATION CONTACT  
**AARQUE GROUP LIMITED**  
 PARTNER OF CHOICE 0508 22 77 83 www.aarque.co.nz



# Is It Real or Printed?



Benchtop UV Flatbed Printer

## VersaUV LEF2-200

### Print Colorful Images on Demand and on Almost Anything

The VersaUV LEF2-200 makes it easy to print stunning, premium-quality photographs, graphics and text on almost anything. Unlike other inkjet printers, ECO-UV ink is cured instantly on the surface of the material, allowing you to print directly onto PVC and plastics, canvas, wood, leather, fabric, etc. White ink is also available to ensure that colors pop on dark or clear substrates. Optional primer ink cartridge provides increased ink adhesion on substrates like acrylic and glass.\*

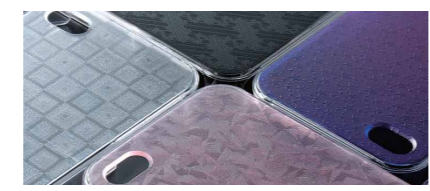
\* For best primer results, it is strongly recommended that users test for adhesion on specific substrates prior to final production.



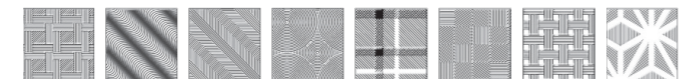
Specialized signs

### Print Gloss and 3D Embossed Finishes

In addition to full color printing, you can produce premium quality gloss and matte finishes as well as amazingly lifelike textures including simulated 3D embossing with multiple layers of Clear ink. Seventy-two ready-to-use texture patterns are included to use immediately after installation, or you can create your own special effects.



  
Roland Texture System Library  
The LEF2-200 offers 72 ready-to-use texture patterns.



**Ink combinations**

 CMYK + Clear + White    
  CMYK + Primer + White    
  CMYK + White + White

### Print Just One or Many

With VersaUV LEF2-200, you can print as few as one item at any time on demand. It gives you the versatility to create prototypes, check the finish of a printed image, produce a special one-of-a-kind gift, or print a small volume of items in-house.

### From Hard to Soft Materials and From Flat to Curved Objects

Capable of stretching around the most complex corners and curves as well as printing on soft materials such as leather and fabric, advanced Roland ECO-UV ink formulations are designed for both flexibility and beautiful imaging. Materials up to 100 mm (3.94 in.) thick can be loaded. The VersaUV LEF2-200 also supports an optional rotary axis jig for printing onto bottles and other cylindrical objects.



Photo frame     Smartphone case     Product design (Smart speaker)

### High Quality Output, Performed Easily and Efficiently

The LEF2-200 incorporates a host of advanced functions to simplify high quality print jobs. A Start Timer Function completes the setup procedures of printhead cleaning and white ink circulation automatically by your designated start time. A positioning jig makes it easy to align items on the print table.

### High Reliability and Safety

The LEF2-200 adopts a new cleaning system. A Head Refresh feature removes any ink remaining on the printheads and cleans the printhead surface to maintain the health of your printer. The airtight cover protects operators from UV light and prevents dust from settling onto the surface of materials while printing.



### Powerful VersaWorks RIP Software Included

The VersaUV LEF2-200 includes the latest VersaWorks 6 RIP software, featuring an intuitive interface for easy operation and job management.